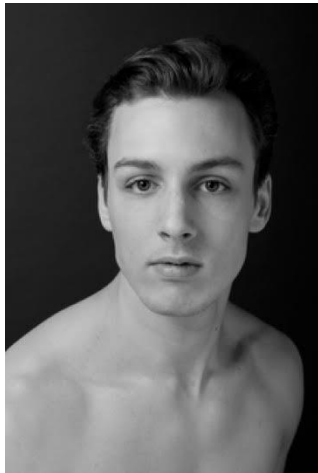


ARTISTIC DIRECTOR TERRENCE S. ORR
PITTSBURGH BALLET THEATRE

FOR IMMEDIATE RELEASE

Contact: Meghan Swartz
Associate Director of Communications
412-454-9117 | mswartz@pittsburghballet.org

Pittsburgh Ballet Theatre Hires New Company Dancer
Castillo to Debut in The Nutcracker Dec. 2-27, at the Benedum



PITTSBURGH, PA (Nov. 9, 2016) – Artistic Director Terrence S. Orr has signed a new male dancer to the Corps de Ballet for the 2016-2017 Season. Alexander Castillo will make his mainstage debut Dec. 2-27, in Pittsburgh Ballet Theatre’s 15 anniversary run of “The Nutcracker” at the Benedum Center.

A native of Bayside, Queens, Castillo joins PBT from Los Angeles Ballet, where he danced for six years and advanced to a soloist position. With the October retirement of Principal Dancer Christopher Budzynski, Castillo will bring the company’s roster to a total of 30 full-time, professional dancers.

He received his training with Ballet Academy East, The School of American Ballet and in summer intensives at Boston Ballet School, Central Pennsylvania Youth Ballet and The School of American Ballet.

He has danced featured roles in George Balanchine works, including “Western Symphony,” “Serenade,” “La Valse,” “Concerto Barocco” and “Danses Concertantes,” in addition to Jiří Kylián’s “Return to a Strange Land.”

His repertoire also includes *Giselle* (Hilarion), *Swan Lake* (Benno/Pas de Trois), *The Nutcracker* (Prince, Arabian), Don Quixote and Michael Fokine’s *Les Sylphides*.

Castillo will join PBT onstage for its 26-performance run of *The Nutcracker*, which kicks off at 11 a.m. Friday, Dec. 2, with a Student Matinee performance sponsored by Highmark Blue Cross Blue Shield. The run also will include a sensory-friendly performance adapted for patrons with special needs at 2 p.m. Tuesday, Dec. 27. A full listing of show times and dates is available at www.pbt.org/nutcracker.

Tickets start at \$28, and are available at www.pbt.org, 412-456-6666 or by visiting the Box Office at Theater Square.

###